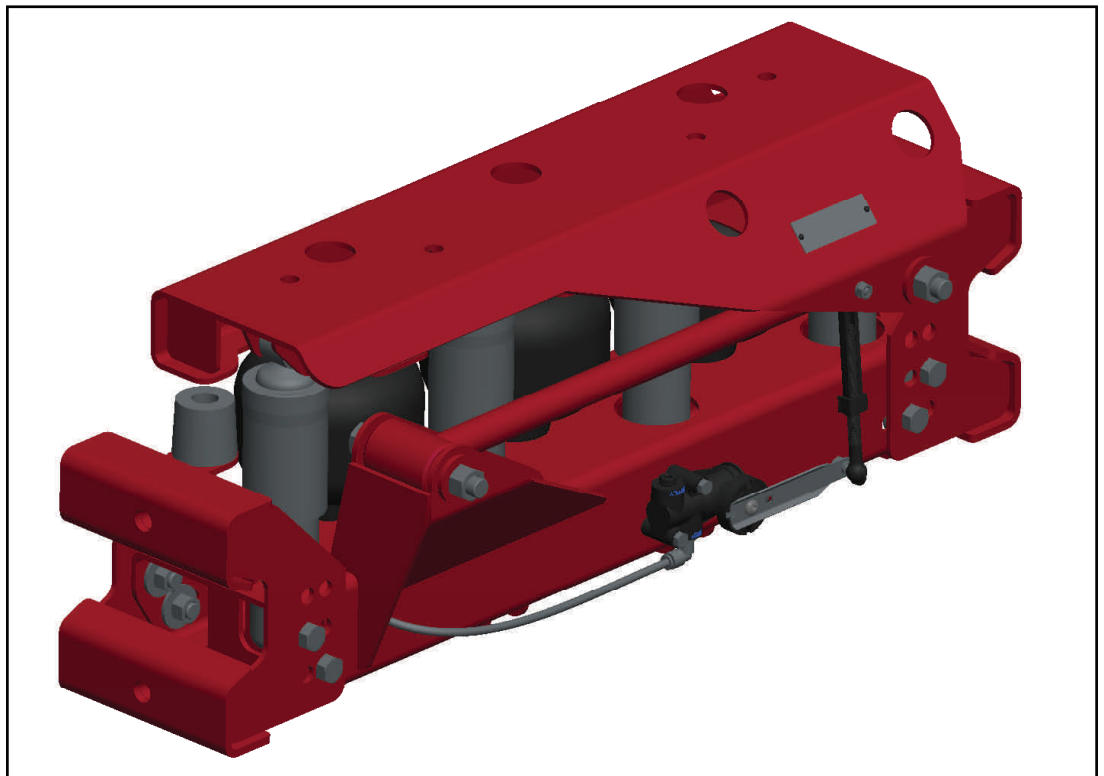


INSTALLATION INSTRUCTIONS

LINK[®] **Cabmate**[®]
Cab Air Suspension

CS120 (2908-A000)
CS140 (2908-B000)



*Link Mfg. Ltd.
223 15th St. N.E.
Sioux Center, IA USA
51250-2120*

*(712) 722-4874
Fax (712) 722-4876*

**QUESTIONS?
CALL CUSTOMER
SERVICE
1-800-222-6283**

The **CABMATE MODEL CS120 and CS140** fit most custom built sleepers.

CS120 UNIT WEIGHT: 91.9 LB.
CS140 UNIT WEIGHT: 93.2 LB.

CABMATE MODEL CS120 & CS140

Review the Parts List on page 3 to become familiar with the different components of the CABMATE.

IMPORTANT: Due to many chassis variables caused by installation of special equipment of options, the fit of the CABMATE CS120 & CS140 may be affected and should be evaluated before beginning installation.

IMPORTANT: Installation of the CABMATE system will allow the sleeper to move freely. Before starting installation, check clearances between the sleeper and any objects the sleeper may contact when it moves (1 1/2 inches of clearance should be sufficient).

NOTE:The CABMATE is designed to be a universal fit, and will require some frame drilling and modifications to the sill of the sleeper. This CABMATE should be installed by a professional.

A. Drill the mount holes in the bottom mounting sill of the sleeper to the dimensions shown (Fig. 1), centered between the frame rails.

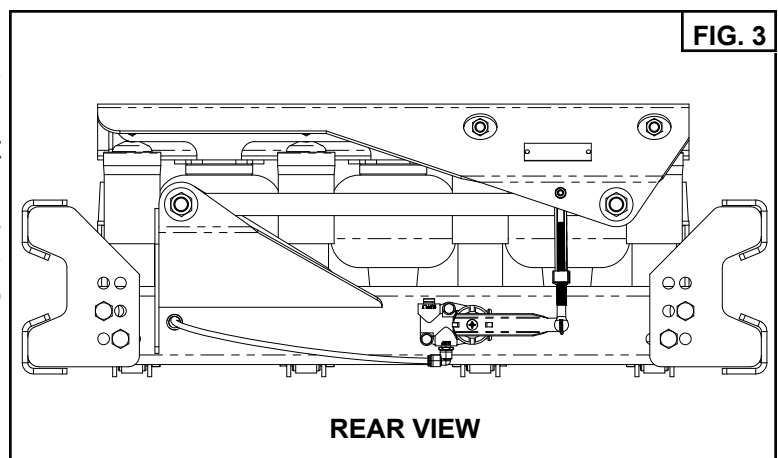
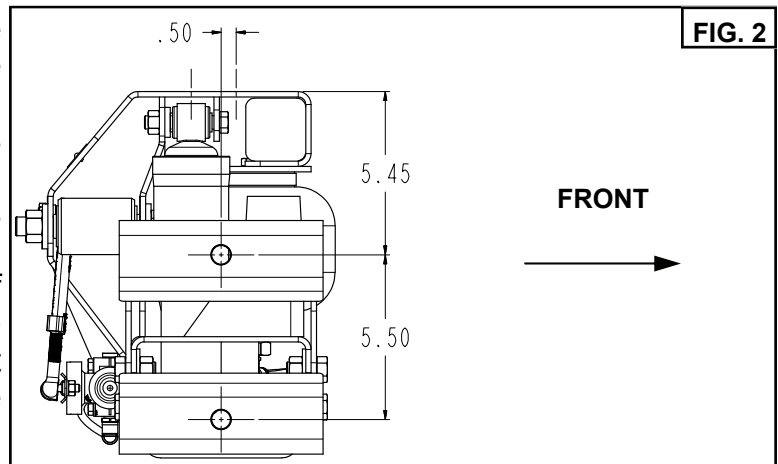
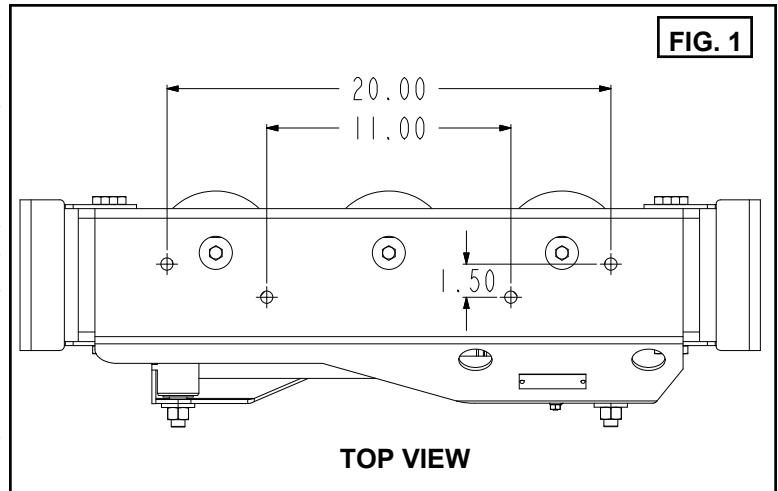
B. Drill the mount holes in the frame rails to the dimensions shown (Fig. 2). Make sure the sleeper is level with the frame, and the CABMATE is aligned vertically.

C. Disassemble the Frame Mount Brackets (No. 26 on the Parts List) from the unit and securely install them to the frame rails using 5/8" grade 8 bolts (not supplied).

D. With the Lateral Control Rod to the rear of the truck, slide the unit down between the frame rails and into the Frame Mount Brackets. Loosely fasten the unit to the Frame Mount Brackets using supplied hardware.

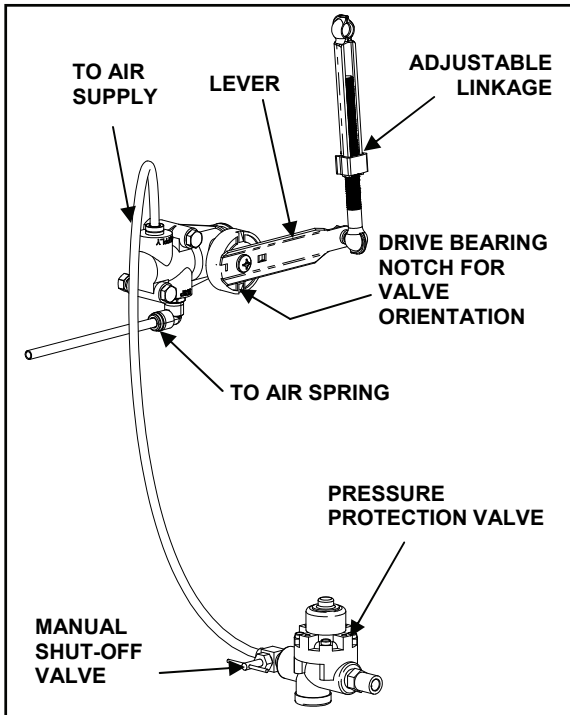
E. Securely fasten the unit to the sleeper using 1/2" grade 8 bolts (not supplied). Securely tighten 1/2" fasteners to the Frame Mount Brackets

F. **IMPORTANT:** After plumbing and height control adjustments are completed, temporarily adjust the CABMATE to its maximum upward position. There must be a minimum of 1/4" gap between the cab and the sleeper.



PLUMBING INSTRUCTIONS

WARNING: FOR SAFTY PURPOSES THE CABMATE MUST BE SUPPLIED FROM A PRESSURE PROTECTED CIRCUIT. IN THE EVENT OF AN AIR LEAK IN THE BUNK SUSPENSION, FAILURE TO PROVIDE A PRESSURE PROTECTED CIRCUIT MAY CAUSE LOSS OF AIR PRESSURE TO VITAL SYSTEMS ON THE VEHICLE.



WARNING: LOSS OR APPLICATION OF AIR PRESSURE TO CABMATE WILL CAUSE SUDDEN MOVEMENT OF THE CAB. PRIOR TO INSTALLING OR PERFORMING MAINTENANCE, BLOCK UP THE CABMATE TO PREVENT THE POSSIBILITY OF INJURY.

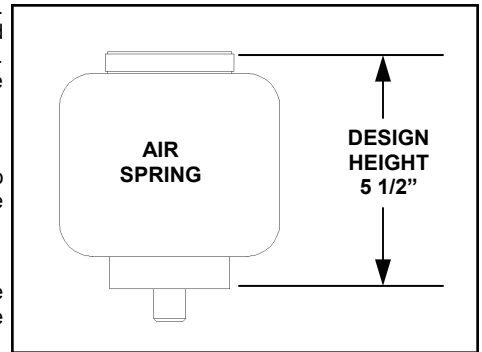
WARNING: CONNECT THE CABMATE DIRECTLY TO THE MAIN AIR TANK. YOU WILL NEED AN AIR PRESSURE PROTECTION VALVE IN THE LINE. (INCLUDED IN THE PRESSURE

PROTECTION KIT. LINK MFG. PART NO. 1350-0000). DO NOT USE AN AIR PRESSURE REGULATOR!

- A. With the tank at 0 p.s.i., remove the existing plug or fitting from the desired port.
- B. Apply joint compound to the fittings and install the pressure protection kit. **DO NOT USE TEFLON TAPE.** Be sure that the arrows on the valve are pointing in the direction of air flow and the vent hole is pointed down. **NOTE:** Additional fittings/reducers may be required to attach the hex nipple to the main air tank.
- C. Run the 1/4" airline from the shut-off valve to the CABMATE. Be sure that the airline has enough clearance so that there are no pinch points that may restrict or cut the airline. Secure the airline using the cable ties supplied by Link Mfg.
- D. Tighten all plumbing fittings. Then, with the system at operating pressure (90 to 110 p.s.i), open the Manual Shut-off Valve to supply air to the CABMATE. Check the system for air leaks.

E. Check for proper operation of the height control valve. Disconnect the valve linkage from the lever. Push the lever **down** 45°, air should flow into the air spring(s). Return the lever to the neutral position. Push the lever **up** 45°, air should exhaust from the air spring(s).

Return the lever to the neutral position; no air should flow. Reconnect the valve linkage to the lever.



HEIGHT ADJUSTMENTS

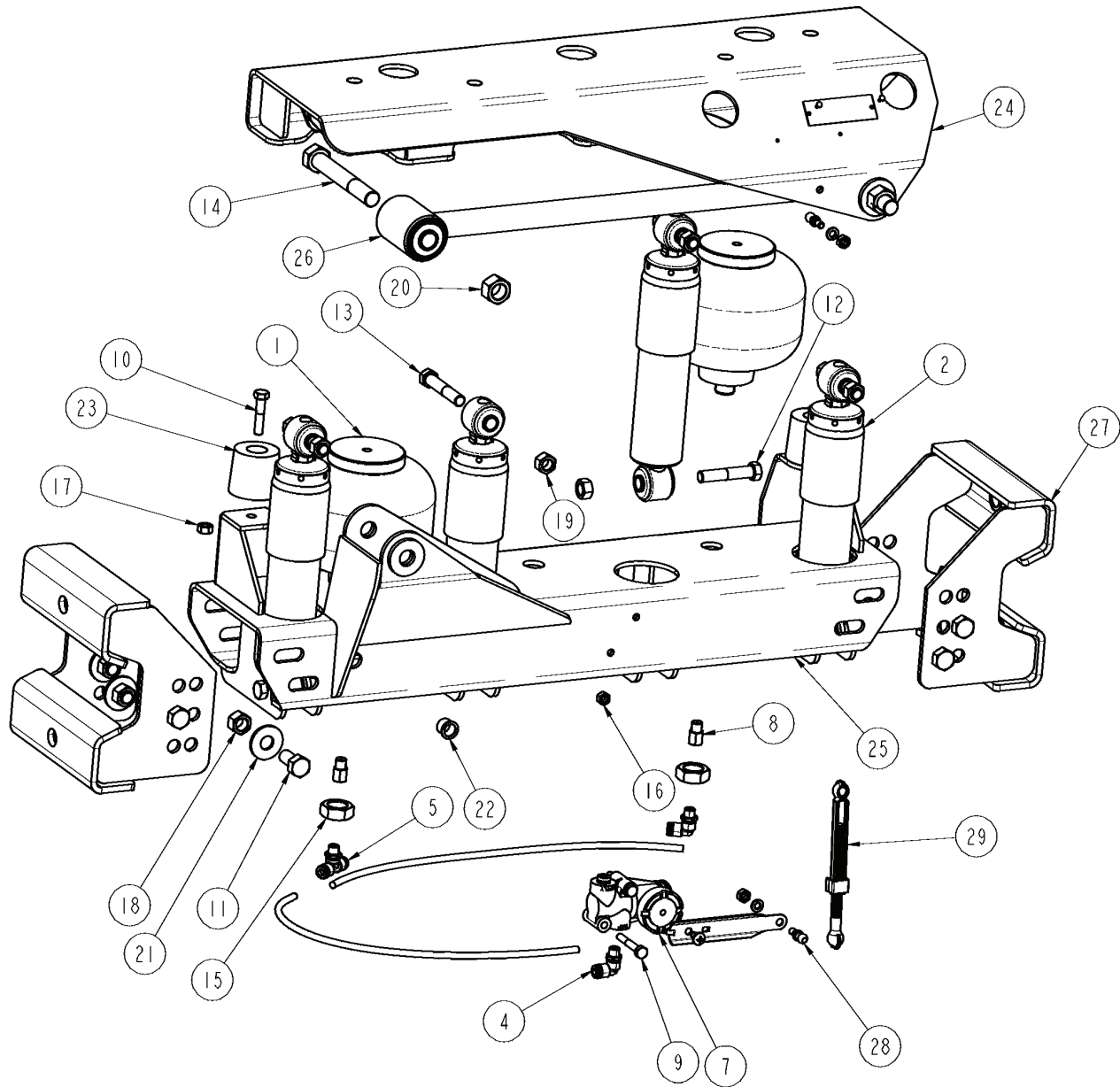
Measure the design height of the air spring(s). The height should be 5 1/2 inches ± 1/16. To change the height, disconnect one end of the valve linkage and adjust accordingly. Tighten the lock nuts on the valve linkage.

MAINTENANCE

CABMATES need no lubrication and little maintenance. The following components should be checked at the time the truck is being serviced. However, immediate corrective action should be

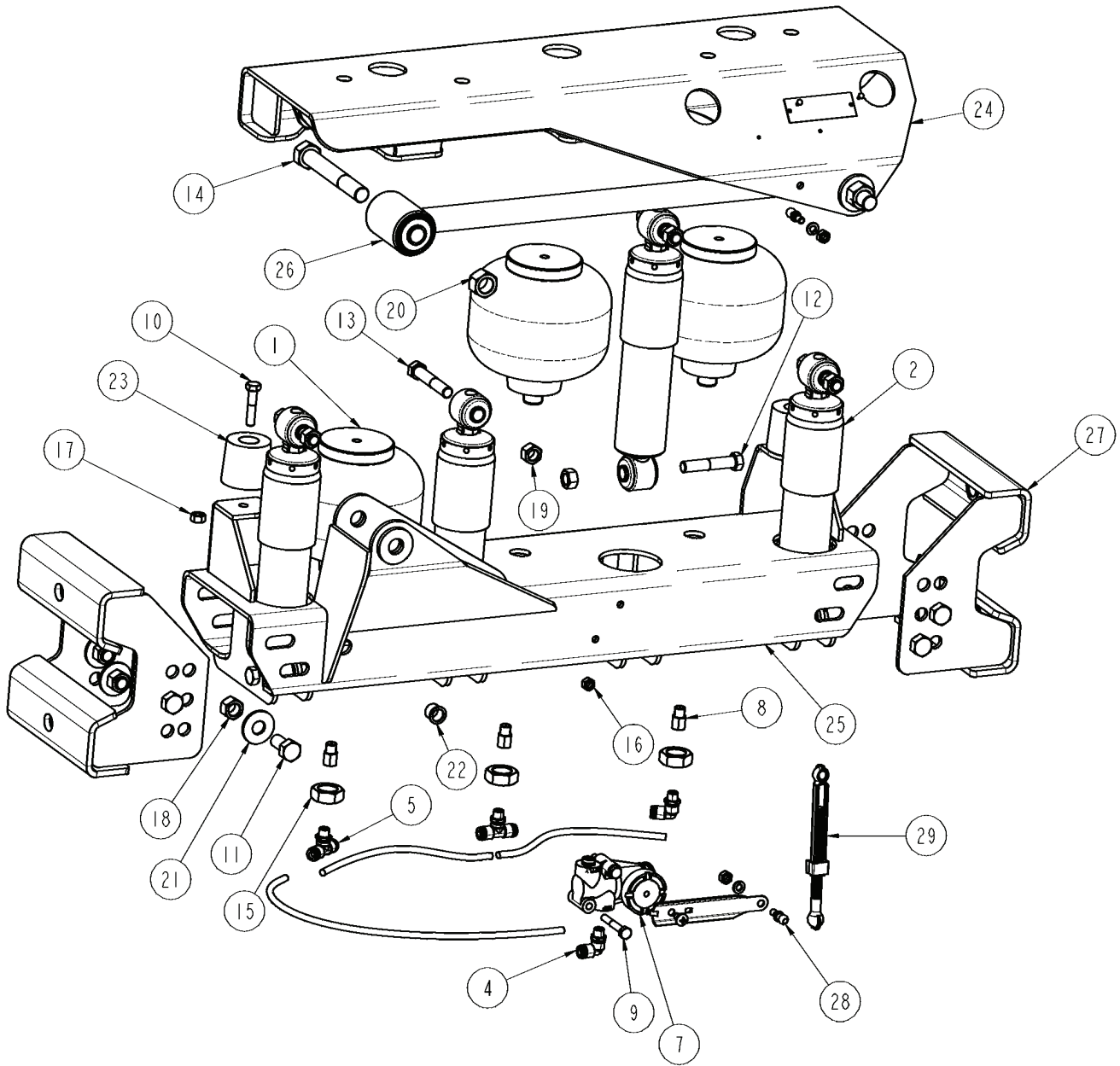
COMPONENT	POSSIBLE PROBLEM	CORRECTIVE ACTION	TORQUE
Airlines	Air leaks	Replace airline	Compression Nut Hand Tight + 1 Turn
Fittings	Air leaks	Remove fitting and apply fresh joint compound. Reinstall fitting, but Do Not Overtighten. Do not use teflon tape.	Threaded into: Metal Plastic 15 Hand Tight Ft. Lbs. + 1 Turn
Air Springs	A. Improper height B. Air leakage	A. Adjust valve linkage to maintain proper air spring height. B. Replace air spring.	Size Metal Plastic 3/8 25 Ft. Lbs 04 Ft. Lbs 1/2 28 Ft. Lbs 10 Ft. Lbs 3/4 30 Ft. Lbs 10 Ft. Lbs
Height Control Valve	Air spring(s) will not inflate when weight is added to the cab; OR Air spring(s) will not deflate when weight is removed from the cab.	A. Inspect valve to insure drive bearing notch is located on " SUSP " port side of valve. If not, loosen lever screw (but do not remove completely) and pull lever loose from drive bearing, rotate drive bearing until the bearing notch is in the correct position and resecure lever by tightening lever screw. B. Replace Valve	1/4 Mount Fasteners 10 Ft. Lbs. Bearing Screw 40-50 InLbs.
Shock Absorber	Insufficient dampening effect	Replace shocks	45 Ft. Lbs.
Lateral Control Rod	A. Loose nuts on lateral control rod bolts B. Worn bushings.	A. Tighten securely to clamp the inner sleeve. B. Replace lateral control rod.	40 Ft. Lbs.

IMPORTANT: Periodically check the tightness of all fasteners.



CABMATE® MODEL CS120 PARTS LIST

ITEM	PART #	DESCRIPTION	QTY	ITEM	PART #	DESCRIPTION	QTY
1	1102-0074	SPRING-AIR	2	16	1476-0800	1/4 UNC HEX CTR LOCK NUT (GR B)	2
2	12040003	SHOCK ABSORBER	4	17	1476-1000	5/16 UNC HEX CTR LOCK NUT (GR B)	2
3	13020090	AIRLINE-NYLON, 1/4" BULK (FEET)	2.8	18	1476-1600	1/2 UNC HEX CTR LOCK NUT (GR B)	8
4	13025203	ELBOW, 1/4 TB 1/8 M-NPT	2	19	1477-1400	7/16 UNF HEX CTR LOCK NUT (GR B)	8
5	13025206	BRANCH TEE, 1/4 TB 1/8 M-NPT	1	20	1477-2001	5/8 UNF HEX TOP LOCK NUT (GR C)	2
6	13500000	KIT-PROTECTION, PRESSURE	1	21	14871600	1/2 TYPE A PLAIN WASHER	8
7	13500113	SERVICE KIT-HEIGHT CONTROL VALVE	1	22	1500-0303	SNAP BUSHING (.250 MAT'L)	1
8	13500505	RESTRICTOR FITTING	2	23	15000070	BUMPER-JOUNCE, 1.75	2
9	1401-0814	1/4 X 1 3/4 UNC HEX CAP SCR (GR 5)	2	24	2908-1000	BRACKET-MOUNT, CAB	1
10	1401-1012	5/16 X 1 1/2 UNC HEX CAP SCR (GR 5)	2	25	2908-1001	BRACKET-SUPPORT, CROSSMEMBER	1
11	1401-1608	1/2 X 1 UNC HEX CAP SCR (GR 5)	8	26	2908-1003	LATERAL CONTROL ROD	1
12	1403-1418	7/16 X 2 1/4 UNF HEX CAP SCR (GR 5)	4	27	2908-1004	BRACKET-MOUNT, FRAME	2
13	1403-1420	7/16 X 2 1/2 UNF HEX CAP SCR (GR 5)	4	28	2991-0026	SERVICE KIT-PIVOT BALL	2
14	1404-2036	5/8 X 4 1/2 UNF HEX CAP SCR (GR 8)	2	29	29910052	KIT-LINKAGE, LONG	1
15	1475-2400	3/4 UNF HEX JAM NUT	2	-	3909-1000	KIT-DOCUMENT, CS160	1



CABMATE® MODEL CS140 PARTS LIST

ITEM	PART #	DESCRIPTION	QTY	ITEM	PART #	DESCRIPTION	QTY
1	1102-0074	SPRING-AIR	3	16	1476-0800	1/4 UNC HEX CTR LOCK NUT (GR B)	2
2	12040003	SHOCK ABSORBER	4	17	1476-1000	5/16 UNC HEX CTR LOCK NUT (GR B)	2
3	13020090	AIRLINE-NYLON, 1/4" BULK (FEET)	2.9	18	1476-1600	1/2 UNC HEX CTR LOCK NUT (GR B)	8
4	13025203	ELBOW, 1/4 TB 1/8 M-NPT	2	19	1477-1400	7/16 UNF HEX CTR LOCK NUT (GR B)	8
5	13025206	BRANCH TEE, 1/4 TB 1/8 M-NPT	2	20	1477-2001	5/8 UNF HEX TOP LOCK NUT (GR C)	2
6	13500000	KIT-PROTECTION, PRESSURE	1	21	14871600	1/2 TYPE A PLAIN WASHER	8
7	13500113	SERVICE KIT-HEIGHT CONTROL VALVE	1	22	1500-0303	SNAP BUSHING (.250 MAT'L)	1
8	13500505	RESTRICTOR FITTING	3	23	15000070	BUMPER-JOUNCE, 1.75	2
9	1401-0814	1/4 X 1 3/4 UNC HEX CAP SCR (GR 5)	2	24	2908-1000	BRACKET-MOUNT, CAB	1
10	1401-1012	5/16 X 1 1/2 UNC HEX CAP SCR (GR 5)	2	25	2908-1001	BRACKET-SUPPORT, CROSSMEMBER	1
11	1401-1608	1/2 X 1 UNC HEX CAP SCR (GR 5)	8	26	2908-1003	LATERAL CONTROL ROD	1
12	1403-1418	7/16 X 2 1/4 UNF HEX CAP SCR (GR 5)	4	27	2908-1004	BRACKET-MOUNT, FRAME	2
13	1403-1420	7/16 X 2 1/2 UNF HEX CAP SCR (GR 5)	4	28	2991-0026	SERVICE KIT-PIVOT BALL	2
14	1404-2036	5/8 X 4 1/2 UNF HEX CAP SCR (GR 8)	2	29	29910052	KIT-LINKAGE, LONG	1
15	1475-2400	3/4 UNF HEX JAM NUT	3	-	3909-1000	KIT-DOCUMENT, CS160	1