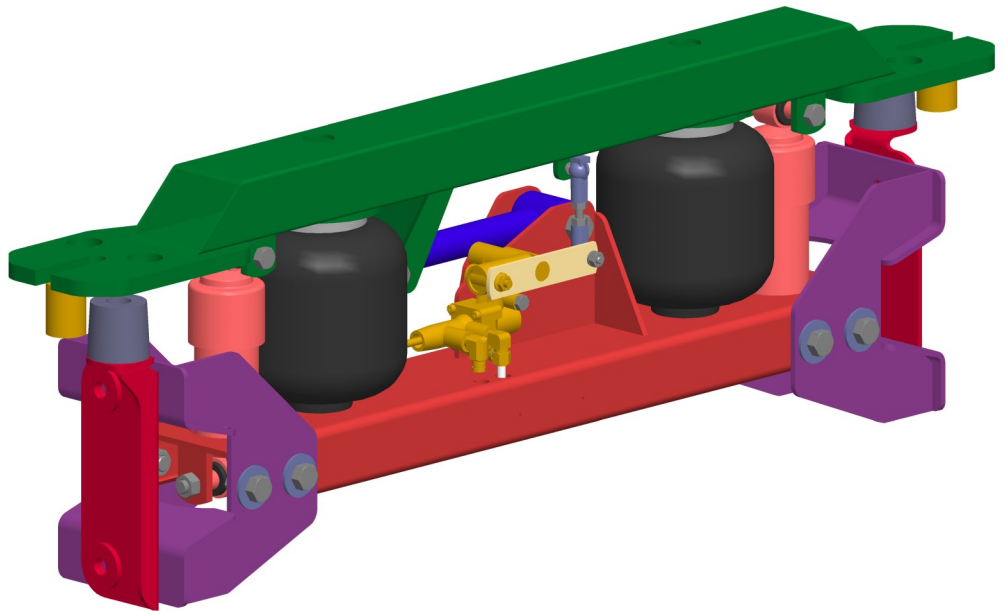


INSTALLATION INSTRUCTIONS



KWS60-A (2906-A000)



The **CABMATE MODEL KWS60-A** fit most mid-1986 and newer Kenworth Sleepers with round cornered doors. It replaces the original sleeper mounts and isolators, Kenworth Part No. K235-1420 and Kenworth Part No. K235-1617 and M500-7014R. **This unit DOES NOT work on trucks with 11-5/8" frame rails.**

*Link mfg. Ltd.
223 15th St. N.E.
Sioux Center, IA USA
51250-2120*

*(712) 722-4874
Fax (712) 722-4876*

**QUESTIONS?
CALL CUSTOMER
SERVICE
1-800-222-6283**

UNIT WEIGHT: 58.7 LB.

NET ADDED WEIGHT: 53.6 LB.

CABMATE MODEL KWS60-A

Review the Parts List on page 3 to become familiar with the different components of the BUNKMATE.

IMPORTANT: Due to many chassis variables caused by installation of special equipment of options, the fit of the KWS60-A CABMATE may be affected and should be evaluated before beginning installation.

IMPORTANT: Installation of the CABMATE system will allow the sleeper to move freely. Before starting installation, check clearances between the sleeper and any objects the sleeper may contact when it moves (1 1/2 inches of clearance should be sufficient).

- A. Remove the original washers and the 5/8" nuts from the top of the original sleep mount. Securely prop up the sleeper and remove all stock mount parts. **NOTE: SAVE** the original mount bolts for later use.

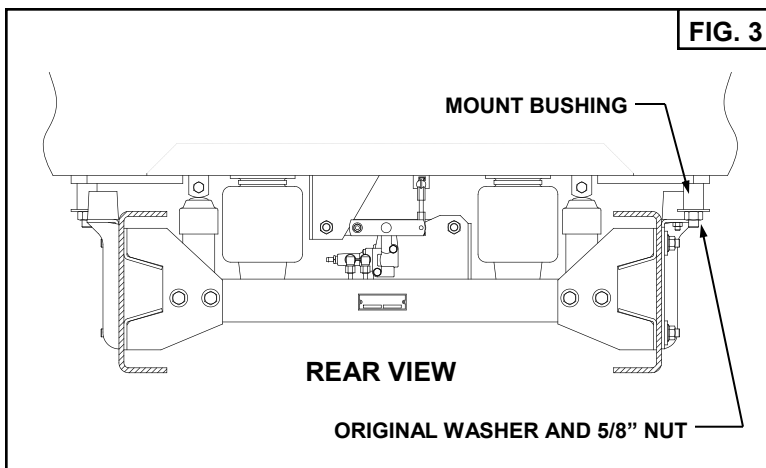
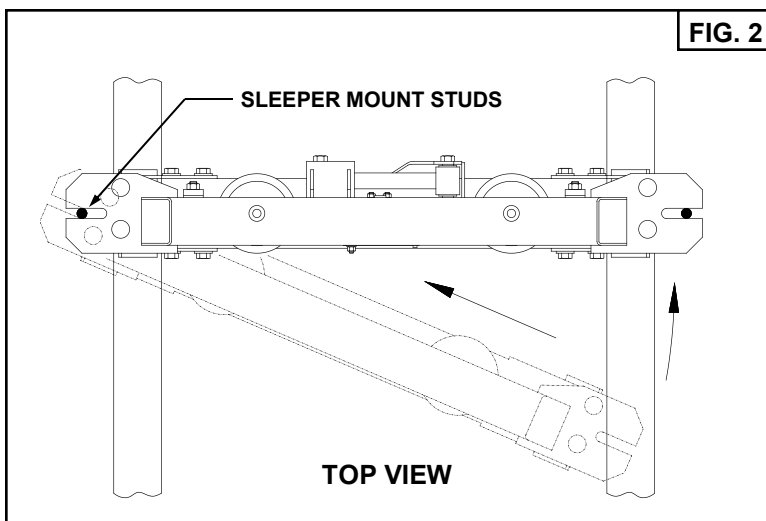
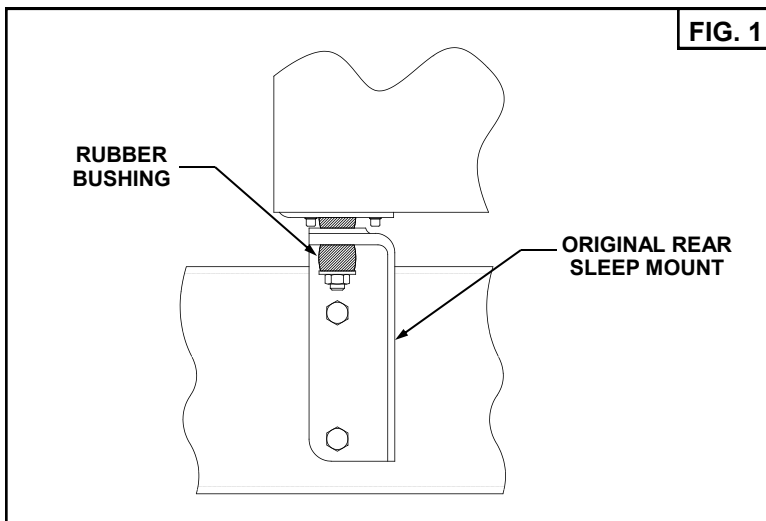
NOTE: Frames with 12mm frame fasteners will require the frame holes to be drilled to 21/32".

- B. Partial disassembly of the CABMATE from its shipping condition is required. Remove the 1/2" Mount Bracket Bolts from the Unit Bottom (Item Nos. 9, 16 and 20 from the parts list). Leave the Mount Brackets on the Unit Bottom to get the whole unit between the frame rails.

- C. Use the slots in the Unit Top to slide the CABMATE into position (See Fig. 2). Center the unit on the truck and fasten the Unit Top to the sleep (See Fig. 3)

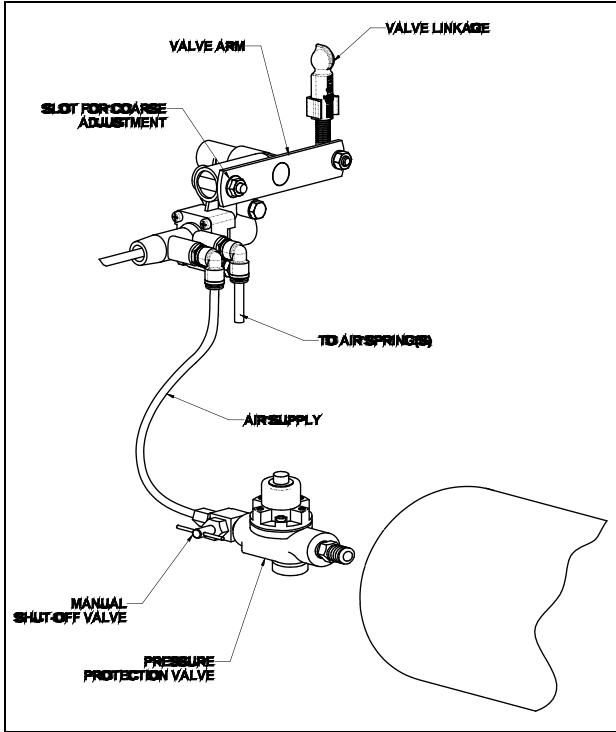
- D. Fasten the Mount Brackets to the frame using 5/8 frame mount fasteners (Item Nos. 12 and 19). Slowly lower the sleeper until the holes in the mount brackets and the Unit Bottom are aligned. Reinstall the 1/2" mount bracket bolts.

- E. See page 2 for plumbing and height control adjustments.



PLUMBING INSTRUCTIONS

WARNING: FOR SAFTY PURPOSES THE CABMATE MUST BE SUPPLIED FROM A PRESSURE PROTECTED CIRCUIT. IN THE EVENT OF AN AIR LEAK IN THE CAB SUSPENSION, FAILURE TO PROVIDE A PRESSURE PROTECTED CIRCUIT MAY CAUSE LOSS OF AIR PRESSURE TO VITAL SYSTEMS ON THE VEHICLE.



should be evacuating from the air spring(s). Return the valve arm to the neutral position; no air should flow. Reconnect the valve linkage to the valve arm.

HEIGHT ADJUSTMENTS

Measure the design height of the air spring(s). The height should be **6 5/16** inches \pm 1/16. To change the height, disconnect one end of the valve linkage and adjust accordingly. Tighten the lock nuts on the valve linkage. The valve arm has a slot which will allow for coarse adjustment also. (See diagram above.)



MAINTENANCE

CABMATES need no lubrication and little maintenance. The following components should be checked at the time the truck is being serviced. However, immediate corrective action should be taken if a serious malfunction occurs.

COMPONENT	POSSIBLE PROBLEM	CORRECTIVE ACTION	TORQUE
Airlines	Air leaks	Replace airline	Compression Nut Hand Tight + 1 Turn
Fittings	Air leaks	Remove fitting and apply fresh joint compound. Reinstall fitting, but Do Not Overtighten. Do not use teflon tape.	Threaded into: Metal Plastic 15 Hand Tight Ft. Lbs. + 1 Turn
Air Springs	A. Improper height B. Air leakage	A. Adjust valve linkage to maintain proper air spring height. B. Replace air spring.	Size Metal Plastic 3/8 25 Ft. Lbs 4 Ft. Lbs 1/2 28 Ft. Lbs 10 Ft. Lbs 3/4 30 Ft. Lbs 10 Ft. Lbs
Height Control Valve	A. Air leakage from joint between valve halves. B. Air spring will not inflate when weight is added to the cab. C. Air springs will not deflate when weight is removed from the	A. Tighten 4 Phillips head screws. B. Replace Valve C. Replace Valve	30 In. Lbs. 1/4 Mount Fasteners 10 Ft. Lbs.
Shock Absorber	Insufficient dampening effect	Replace shocks	45 Ft. Lbs.
Lateral Control Rod	A. Loose nuts on lateral control rod bolts B. Worn bushings.	A. Tighten securely to clamp the inner sleeve. B. Replace lateral control rod.	40 Ft. Lbs.

IMPORTANT: Periodically check the tightness of all fasteners.

*Note: If you attempt to disassemble or adjust fittings on the height control valve, it will void your warranty. Contact Link Manufacturing for assistance.

WARNING: LOSS OR APPLICATION OF AIR PRESSURE TO CABMATE WILL CAUSE SUDDEN MOVEMENT OF THE CAB. PRIOR TO INSTALLING OR PERFORMING ANY MAINTENANCE, BLOCK UP THE CABMATE TO PREVENT THE POSSIBILITY OF INJURY.

WARNING: CONNECT THE CABMATE DIRECTLY TO THE MAIN AIR TANK. YOU WILL NEED AN AIR PRESSURE PROTECTION VALVE IN THE LINE. (INCLUDED IN THE PRESSURE PROTECTION KIT, LINK MFG. PART NO. 1350-0000). DO NOT USE AN AIR PRESSURE REGULATOR!

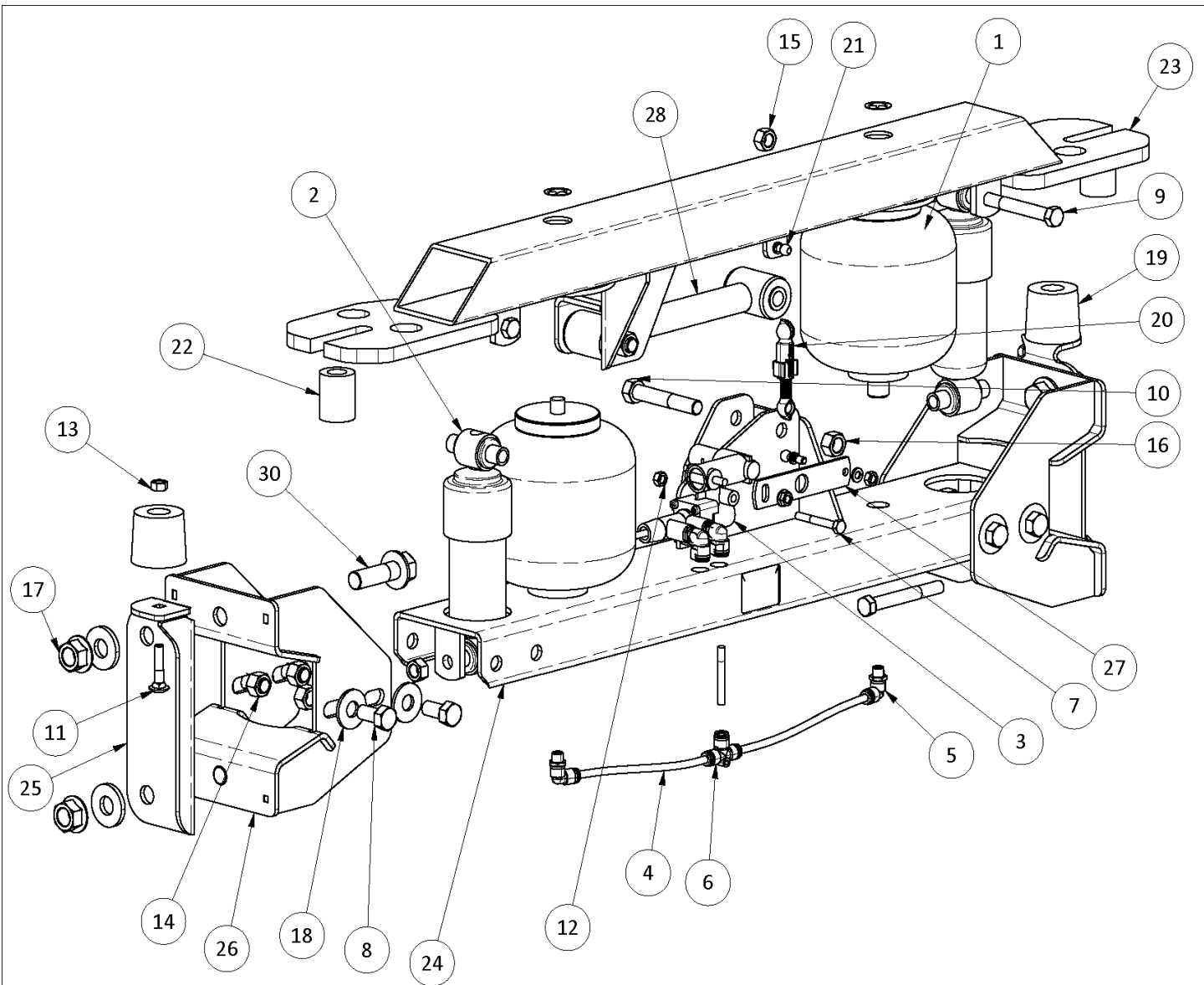
A. With the tank at 0 p.s.i., remove the existing plug or fitting from the desired port.

B. Apply joint compound to the fittings and install the pressure protection kit. **DO NOT USE TEFLON TAPE.** Be sure that the arrows on the valve are pointing in the direction of air flow and the vent hole is pointed down. **NOTE:** Additional fittings/reducers may be required to attach the hex nipple to the main air tank.

C. Run the 1/4" airline from the shut-off valve to the CABMATE. Be sure that the airline has enough clearance so that there are no pinch points that may restrict or cut the airline. Secure the airline using the cable ties supplied by Link Mfg.

D. Tighten all plumbing fittings. Then, with the system at operating pressure (90 to 110 p.s.i.), open the Manual Shut-off Valve to supply air to the CABMATE. Check the system for air leaks.

E. Check for proper operation of the height control valve. Disconnect the valve linkage from the valve arm. Push the valve arm **down** 45° and hold for 5 seconds, air should be flowing into the air spring(s). Return the valve arm to the neutral position. Push the valve arm **up** 45° and hold for 5 seconds, air



CABMATE® MODEL KWS60-A PARTS LIST

ITEM	PART NUMBER	DESCRIPTION	QTY	ITEM	PART NUMBER	DESCRIPTION	QTY
1	11020043	SPRING-AIR	2	16	14771601	1/2 UNF HEX TOP LOCK NUT (GR C)	2
2	12011044	SHOCK ABSORBER	2	17	14802004	5/8 UNC TOP LOCK FL NUT (GR G) O&P	4
3	13010020	VALVE-CONTROL, HEIGHT	1	18	14871600	1/2 TYPE A PLAIN WASHER	8
4	13020090	AIRLINE-NYLON, .250 O.D., BULK (FEET)	1.5	19	15000070	BUMPER-JOUNCE, 1.75	2
5	13025203	ELBOW, 1/4 TB 1/8 M-NPT	4	20	15000211	LINKAGE-VALVE	1
6	13025205	UNION TEE, 1/4 TB	1	21	15000224	BALL-PIVOT, THREADED	1
7	14010816	1/4 X 2 UNC HEX CAP SCR (GR 5)	2	22	29060001	MOUNT-BUSHING	2
8	14011608	1/2 X 1 UNC HEX CAP SCR (GR 5)	8	23	29061000	UNIT-TOP	1
9	14031428	7/16 X 3 1/2 UNF HEX CAP SCR (GR 5)	4	24	29062000	UNIT BOTTOM	1
10	14041624	1/2 X 3 UNF HEX CAP SCR (GR 8)	2	25	29067000	BUMPER MOUNT PLATE	2
11	14351012	5/16 X 1 1/2 UNC RND HD SQ NK BOLT (GRADE 5)	2	26	29068000	BOTTOM FRAME MOUNT BRACKET	2
12	14760800	1/4 UNC HEX CTR LOCK NUT (GR B)	2	27	29900700	ASSEMBLY-ARM, VALVE	1
13	14761000	5/16 UNC HEX CTR LOCK NUT (GR B)	2	28	29932008	LATERAL CONTROL ROD, 8.00	1
14	14761600	1/2 UNC HEX CTR LOCK NUT (GR B)	8	30	141A2016	5/8 X 2 UNC FLANGE BOLT (GR 8) O&P	4
15	14771400	7/16 UNF HEX CTR LOCK NUT (GR B)	4	-	13500000	KIT-PROTECTION, PRESSURE	1